



Siena Twist+

All Stage 360° Car Seat Instruction Manual

NOTICE

This is an "i-Size" Child Restraint System.

i-Size ISOFIX car seat suitable 40cm–135cm.

Approved to Regulation No.129, for use in, "i-Size compatible" vehicle seating positions as indicated by vehicle manufacturers in the vehicle users' manual.

If in doubt, contact hello@amanababy.com.

DO NOT USE REARWARD FACING ECRS IN SEATING POSITIONS WHERE THERE IS AN ACTIVE FRONTAL AIRBAG INSTALLED. UNIVERSAL Vehicle ISOFIX Child Restraint Systems. IMPORTANT – DO NOT USE FORWARD FACING BEFORE THE CHILD'S AGE EXCEEDS 15 months (Refer to instructions).

Stature: Child height 40–135cm

Weight: 0–36kg

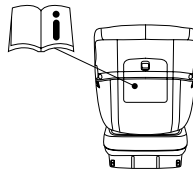
Suitable age: Birth – approx. 12 Years

Rearward facing 40–105cm: ISOFIX + Support leg + harness

Forward facing 76–105cm: ISOFIX + Support leg + harness

Forward facing 100–135cm: ISOFIX attachments + adult safety-belt or adult safety-belt only

Please carefully read this manual and follow each step to ensure a comfortable travel and best protection for your child. Please keep the instruction manual in the instruction manual storage compartment at the back of the seat body at all times.



Notice

Notice regarding i-Size category Enhanced Child Restraint Systems (40–105cm). This is an i-Size Enhanced Child Restraint System. It is approved according to UN Regulation No. 129, for use in, i-Size compatible vehicle seating positions as indicated by vehicle manufacturers in the vehicle users' manual. If in doubt, consult either the Enhanced Child Restraint System manufacturer or the retailer.

Notice regarding i-Size booster seat category Enhanced Child Restraint Systems (100–150cm). This is an i-Size booster seat Enhanced Child Restraint System. It is approved according to UN Regulation No. 129, for use primarily in "i-Size seating positions" as indicated by vehicle manufacturers in the vehicle user's manual. If in doubt, consult either the Enhanced Child Restraint System manufacturer or the retailer.

⚠ WARNING: NOT TO USE REARWARD FACING ECRS IN SEATING POSITIONS WHERE THERE IS AN ACTIVE FRONTAL AIRBAG INSTALLED.

⚠ IMPORTANT! DO NOT USE FORWARD FACING BEFORE THE CHILD'S AGE EXCEEDS 15 months (refer to instructions).

Contents

1. Warning	3
2. Safety Instructions	5
2.1 Installation Mode Selection	6
3. Structure	7
4. Use In The Vehicle	9
4.1 Install In The Car Correct Position	9
4.2 Adjusting The Child Seat	12
4.3 Adjusting The Harness	13
4.3 Adjusting The Headrest	14
4.4 Safety Buckle Usage	14
5. Installation	15
5.1 ISOFIX Before Installation	15
5.2 ISOFIX Installation Steps	15
5.3 ISOFIX Unlock	16
5.4 Installation Of Child Seat	16
5.5 Adjust The Support Leg	16
5.6 Fold The Support Leg	17
5.7 Accessory Configuration Diagram	17
5.8 Installation For Rearward Facing 40–105cm:	18
5.9 Installation For Rearward Facing 76–105cm:	19
5.10 Installation For Forward Facing 100–135cm:	19
5.11 Remove The Seat From The Car	22
5.12 Remove Fabric Cover	23
6. User Instructions	24

1. Warning

To ensure that your child is protected to a greater degree, please read the following instructions carefully:

1. Do not put the child on seats with activated airbag under any circumstances.
2. Please read the relevant ISOFIX interface instructions in the car user manual provided by the car manufacturer before installing this seat.
3. The seat belt of the child restraint system cannot be changed or replaced with other belts at will, to ensure that the webbing connecting the child restraint system with the vehicle should be fastened tightly. The webbing that restrains children should be adjusted according to the child's body. The webbing must not be twisted to ensure that it is installed according to the manufacturer's instructions.
4. When traveling with your baby, to check the fixed baby's shoulder strap and waist belt to ensure that the waist belt can well restrain the baby's pelvic position.
5. The rigid parts and plastic parts of the child restraint system should be placed and installed in accordance with the requirements of the manual to ensure that the child restraint system is not be blocked by the movable seat or door in the car.
6. Products without certification and modified are dangerous, and nearby there is no installation instructions provided by the manufacturer is also very dangerous.
7. It is very important for the ISOFIX interface and the supporting leg to be properly fixed and locked, so please be sure to check the child seat fixation before taking your baby out.
8. Please do not leave your child unattended in the restraint system.
9. When the car is parked under the scorching sun, the temperature inside will rise. It is recommended to cover it with a towel when you are not using the child car seat to avoid burning your baby.
10. In the event of an accident, it is very important to move the baby out of the car quickly. This means that the safety buckle must be of good performance and cannot be blocked or damaged. Therefore, you should pay attention to checking the safety buckle regularly.
11. Check the seat belt every time you use the car seat. If the seat belt is loose or detached, it will be dangerous for your baby.

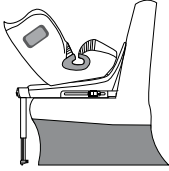
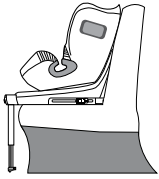
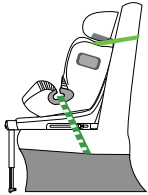
12. Luggage in the car or sharp and hard objects should be tied well. Loose objects may hurt others in the event of an accident.
13. When the child car seat is not in use, it is recommended that the seat always be secured to avoid being thrown out in the event of an accident.
14. In an emergency, press the red button on the safety buckle to release the seat belt and take the child out.
15. When the child car seat is not in use, please place it in an appropriate place, do not cover heavy objects and touch corrosive substances.
16. Never use child car seat without its cover and it is advised not to use a cover that is not recommended by the manufacturer, due to the cover material will affect the overall performance of the child restraint system.
17. If your child car seat is damaged in an accident, it is forbidden to use it again and you must replace it with a new one.
18. Please do not use second-hand car seat, otherwise it will cause danger.
19. Warning! Do not use any stress points other than those described in the instruction document and marked on the child restraint system.
20. If the adult seat belt interferes with the position of the main force point of the child restraint system, it cannot be used. If the user has doubts about this point, it is recommended to contact the manufacturer of the child restraint system.

2. Safety Instructions

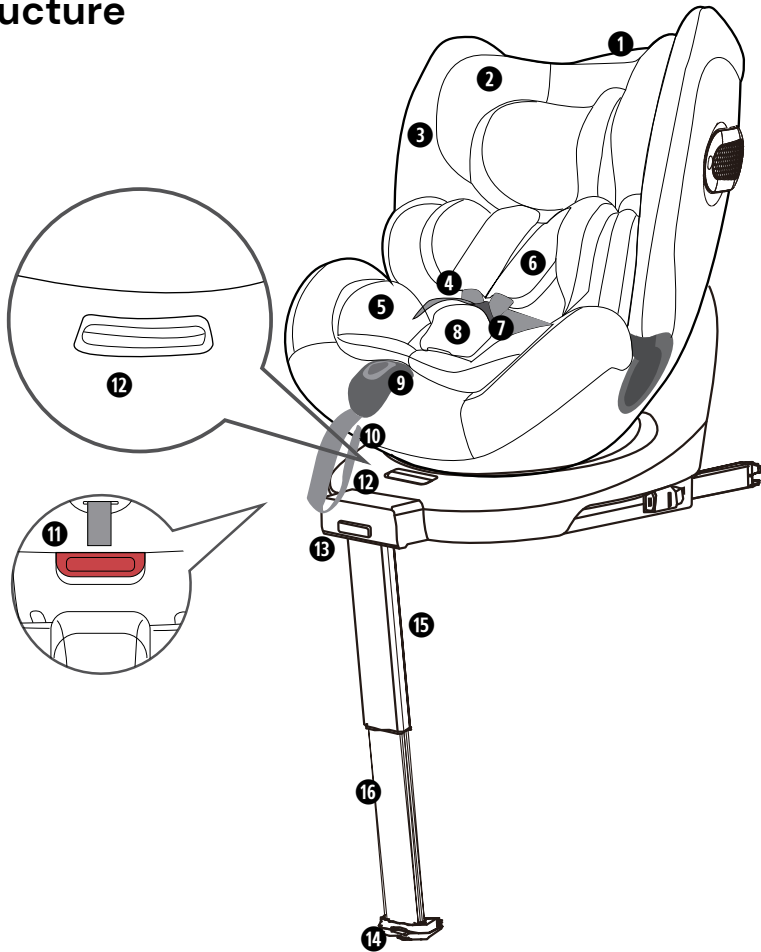
- If you are driving for a long time, please stay appropriately on the way, otherwise the child will get tired easily. Please keep the child in the child seat when the car is moving.
- If the child unfastened the safety belt of the child car seat, the car should be parked in a safe place immediately, and the safety belt should be re-fastened before starting the car.
- Do not leave the safety buckle in a half-locked state.
- Ensure that the tightness of the child car seat belt and the position of the protective pad fully comply with the requirements of the instructions.
- Every time use the child car seat, make sure that the car seat belt is tightened and the seat is firmly installed.
- Do not attempt to change any original components or add parts to the seat, otherwise its safety and function may be seriously affected.
- Parents should have a correct concept of travel safety, and set an example to fasten the car seat belt, and do not violate the driving safety principles because of children's crying.

⚠ WARNING! The products should be assembled by adults. When using the product, the caregivers must not leave! Keep away from fire! Users and guardians should read through the instructions carefully before using this product, and please keep it for future reference. It will tell you the exact operation method and installation procedure to avoid damage or injury to your child's life due to using the product incorrectly.

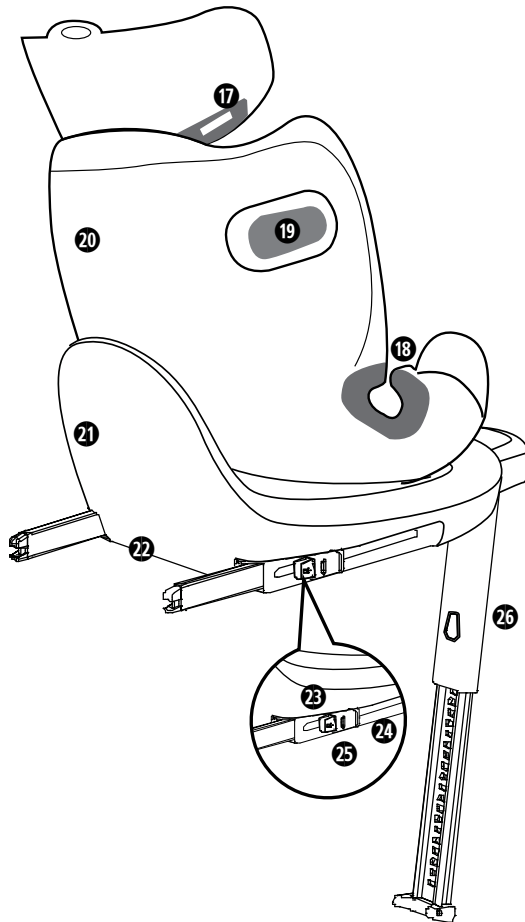
2.1 Installation Mode Selection

Conform to National standard: GB27887-2011 and European ECE R129/03	Stature	Mode	Installation Diagram	Fixed Mode	Age	Position
	40-105cm	Baby Mode		ISOFIX+ Support Leg	0-4 Years Old	Position 4
	76-105cm	Toddler Mode		ISOFIX+ Support Leg	1-4 Years Old	Position 1 - 3
	100-135cm	School Children Mode		ISOFIX+ Adult Safety Belt Only	3-12 Years Old	Position 1

3. Structure



- | | |
|---|----------------------------------|
| 1. Headrest adjustment handle | 9. Strap adjusting button |
| 2. Headrest | 10. Adjusting strap |
| 3. Fabric cover | 11. Recline handle |
| 4. Shoulder strap (shoulder safety strap) | 12. 360° rotation button |
| 5. Insert cushion | 13. Support leg adjusting button |
| 6. Shoulder pad | 14. Support leg force indicator |
| 7. Safety buckle | 15. Support leg (outer) |
| 8. Buckle pad | 16. Support leg (inner) |



17. Shoulder strap guide

18. Belt guide

19. Left and right energy
absorption side protection

20. Backrest shell

21. Base shell

22. ISOFIX interface

23. ISOFIX unlock button

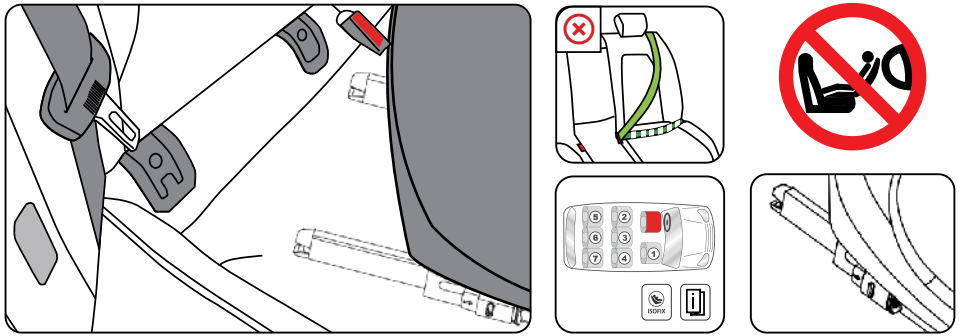
24. ISOFIX second-lock button

25. FIX status red and green windows

26. Support leg release button

4. Use In The Vehicle

4.1 Install In The Car Correct Position



The child restraint system complies with the ECE UN R129/03 standard. For use in, the compatible child car seat seating on the vehicle as indicated by vehicle manufacturers in the vehicle users' manual. It will fit most, but not all vehicles. Please read the applicable car list to check that your vehicle is listed on it. If your car is not equipped with ISOFIX, you will need to contact the car manufacturer.

In special circumstances, the child car seat can be installed in the front seat of the car.

Notes are as follows:

- Check whether the seat is equipped with the ISOFIX connection system. If the ISOFIX connection system is not installed, this child car seat cannot be used.
- Disable the passenger airbag. If your car cannot disable the airbag, do not install the child seat on the front seat of the car.

Please always follow the car manufacturer's recommendations.

⚠ WARNING! Any luggage or other objects liable to cause injuries in the event of a collision should be properly secured.

⚠ WARNING! Never leave your child unattended in the child restraint system, even for a short period of time. Protect the child restraint system against direct sun light by one covering (such as light coloured cloth) to prevent high temperature from hurting child's skin.

When 40–105cm, the ECRS is restrained by ISOFIX+ Support leg, not by Adult safety-belt.

⚠ WARNING! Never install the child seat on the side seat at right angles to the direction of the car. The child seat is also not suitable for rear-facing seat in the car, such as minivans or minibuses. When the child seat is not in use, please also secure it on the seat of the car with the ISOFIX connection system to prevent the safety seat from being unstable, make you and other passengers be injured when the car is in an emergency stop or a minor collision.

Safety in the car

⚠ WARNING! Do not secure the child seat on seats in the car with activated airbags.

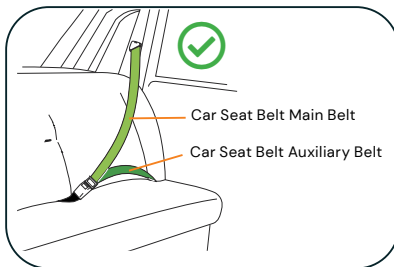
⚠ WARNING! After a severe accident, the restraint system should be replaced in time.

To ensure the safety of all passengers, please make sure...

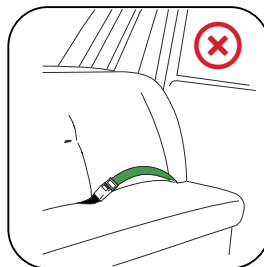
Please lock the folding seat back in the car upright position. When installing the child seat on the front passenger seat, please adjust the seat in the car to the rearmost position. Please properly fix all objects that may cause injury in the accident. All passengers in the car must wear seat belts.

Protect your car

Some car seat covers are more sensitive (such as velvet, leather, etc.), which may cause discolouration after use. To avoid it, you can such as put blankets and towels under the child safety seat. In this aspect, you can refer to the “Cleaning” chapter in the manual, and please follow it before using the child safety seat for the first time.



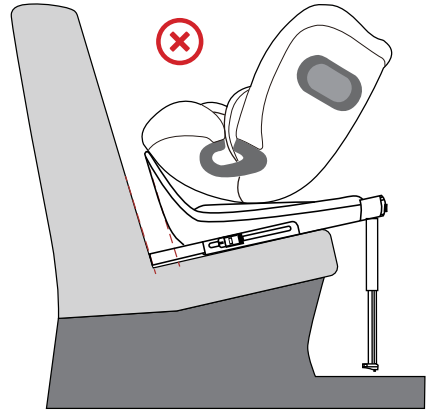
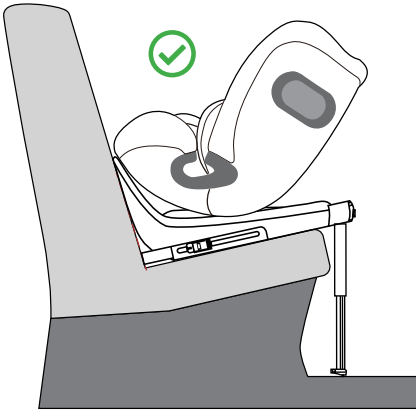
3-Point automatic belt



2-Point automatic belt

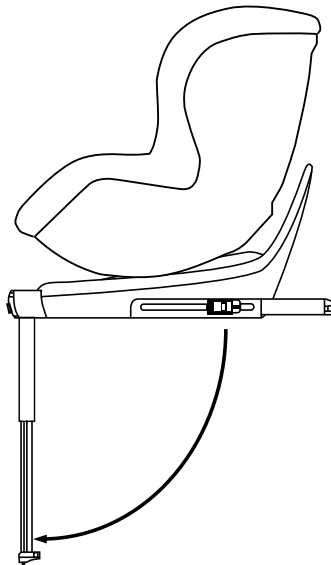


No Belt



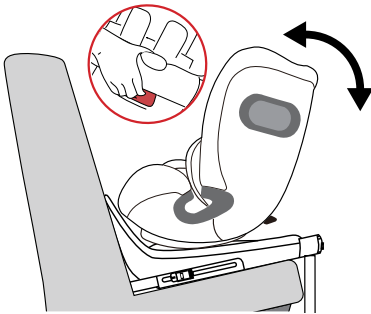
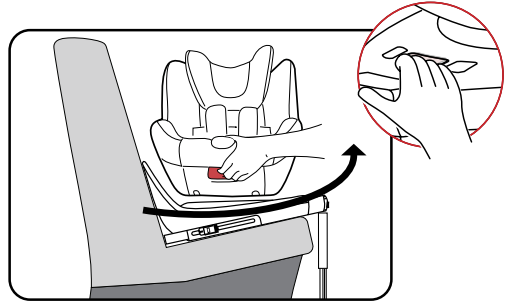
⚠ IMPORTANT!

Do not use forward facing before the child's age exceeds 15 months it must not be installed and used forward (according to the child safety seat industry consensus, we recommend that you use the backward restraint system to fit your child and body. Please try to extend the time for your child's backward use. Please refer to the instructions for use).

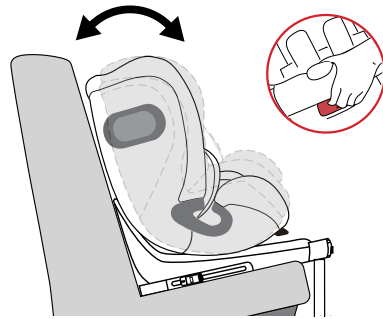


4.2 Adjusting The Child Seat

The child seat has a 360° rotation function, and the backrest can be adjusted in 3 positions at any angle to meet the needs of different comfort levels. Pull up the ① recline handle, at the same time push or pull the seat to the required position. Loosen the ① recline handle, push or pull the seat again to hear a sound “click”, check whether the backrest angle is exact the required one, if not please repeat the previous mode to adjust it.



Rearward Installation



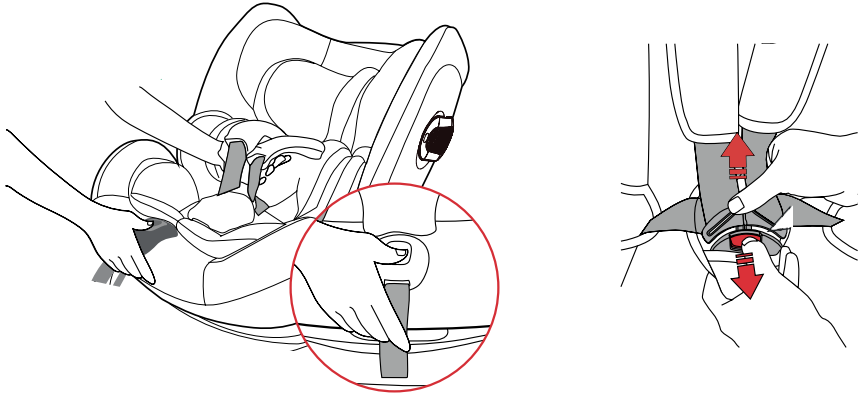
Forward Installation

The child seat not only provides a 360° rotation function, so that your child can easily get in and out of the carriage, but also allows you to change the seat from front-facing installation to rear-facing installation. To meet different needs.

⚠ CAUTION! According to traffic accident statistics, it is safer to install child safety seats in the reverse direction facing the vehicle. Therefore, we recommend using the child safety seat in the backward position as long as possible. Height range for backward installation.

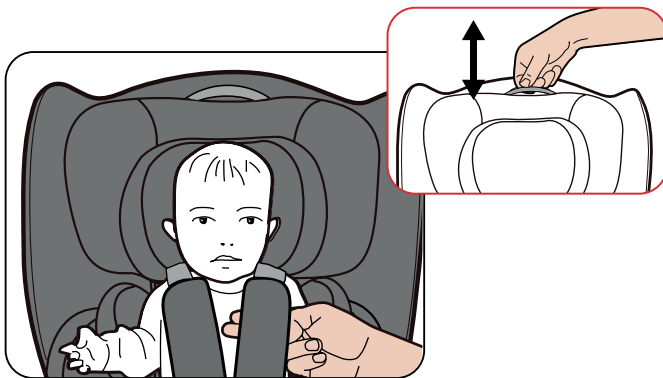
4.3 Adjusting The Harness

⚠ CAUTION! Please ensure no toys or other objects in the child safety seat. Loosen the shoulder straps: press the ❶ central adjusting button, and simultaneously pull the ❷ two shoulder straps outwards (only pull the shoulder straps, not the ❸ shoulder pads) to separate the shoulder straps from left and right, and put the baby in.



Height adjustment of the headrest and shoulder strap: Pull up the headrest adjusting handle, the headrest and the shoulder strap move up synchronously. Press down the headrest adjusting handle and move the headrest down synchronously with the shoulder strap.

⚠ CAUTION! Please loosen the seat safety belt before adjusting the height of the headrest.



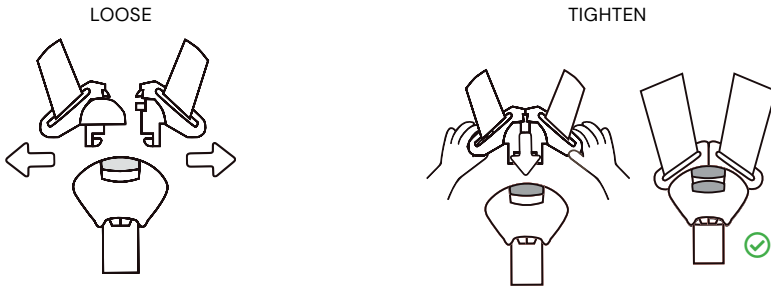
4.3 Adjusting The Headrest

Tighten the shoulder strap: Pull ⑩ adjusting strap with one hand until the shoulder strap is flat against the child's body.

⚠ CAUTION! Grasp the ④ shoulder strap with one hand (see figure with index finger and middle finger) and then slowly pull ⑩ adjusting strap with one hand until the shoulder strap and fingers are flat against the child's body, stop pulling the ⑩ adjusting strap, the strength of pulling shoulder straps should be moderate. Adjust the shoulder strap to be at the child's shoulder.



4.4 Safety Buckle Usage



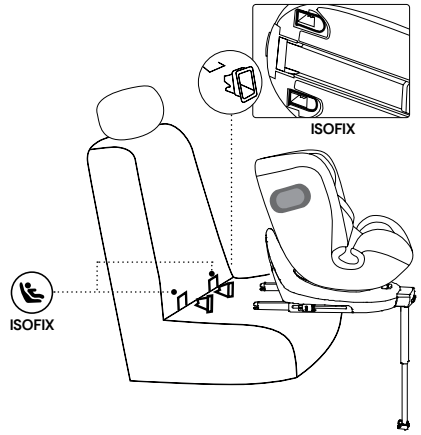
When adjusting, pull the shoulder strap instead of the shoulder pad.

Check to ensure that the child can be securely fastened by the seat belt, and the gap between the seat belt and the child is two fingers thick.

5. Installation

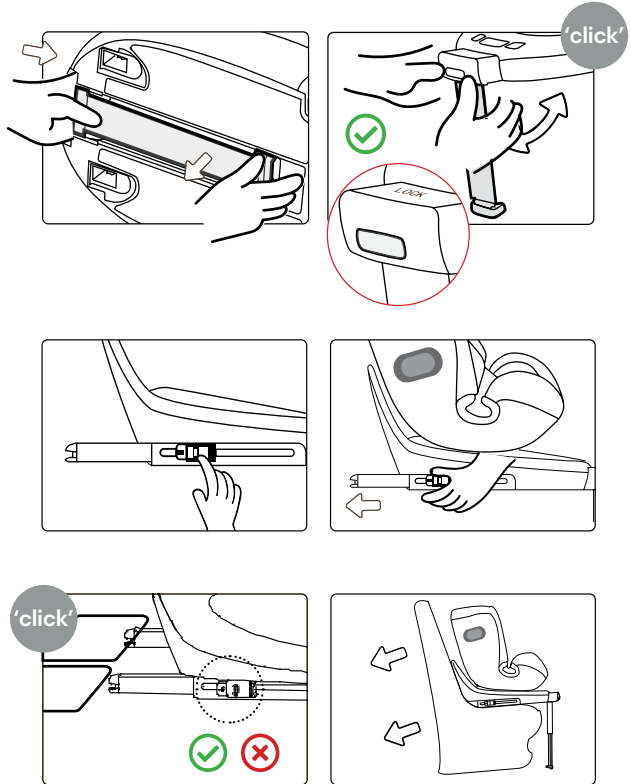
5.1 ISOFIX Before Installation

Before installation, the user should read the instructions on ISOFIX anchor points in the car manufacturer’s manual. Please choose a suitable installation seat in the car, take out the ISOFIX sleeve from the bottom of the base shell and install it to the iron rod connected with the car (If there is an ISOFIX sleeve in the car itself, no installation is required).



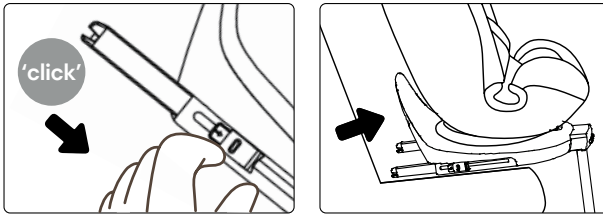
5.2 ISOFIX Installation Steps

- Unfold the support leg, press the support leg movement unlock button, while pull the support leg outwards until the LOCK icon is visible and a “click” sound is heard, which indicates that the support leg has been pulled out in place.
- Simultaneously press the ISOFIX unlock button and the second lock button, pull the ISOFIX connector back, and pull the corresponding ISOFIX connector out backward until it is extended.
- Gently push the child safety seat against the back of the car until it is fully aligned with the back of the car.



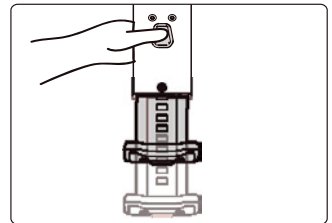
5.3 ISOFIX Unlock

- Press the ISOFIX unlock button and the secondary lock button at the same time until a “click” sound is heard and the ISOFIX status window displays red, indicating unlock is done. This method applies for both sides.
- Take out the seat, if the ISOFIX is in the longest position, you need to press the ISOFIX unlock button and the secondary lock button at the same time, followed by pressing ISOFIX extension button retracting the while ISOFIX connector to the shortest position. If ISOFIX is not in the longest position, you can directly retract the ISOFIX.



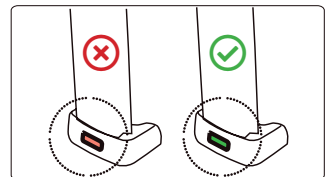
5.4 Installation Of Child Seat

When the support leg is folded on the bottom of the child safety seat, grasp the support leg and pull it outward firmly so that the support leg reaches the maximum expansion angle. Press the support leg movement unlock button and pull the support leg outward until the 'LOCK' icon is visible and a “click” sound is heard, indicating that the support leg has been pulled out in place.



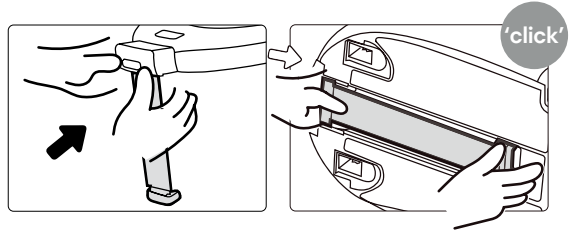
5.5 Adjust The Support Leg

Press and hold the support leg adjustment button with one hand to pull the inner tube of the support leg until the support leg stably contacts the ground of the car and the force indicator of the support leg displays green, indicating the support leg is locked.



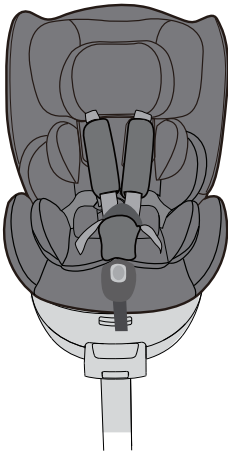
5.6 Fold The Support Leg

Adjust the support leg to the shortest, press the support leg movement unlock button then firmly push the support leg inward, fold it into the groove of the base and press it to a state that it won't fall out naturally.

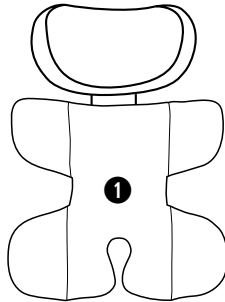


⚠ Note that the support leg cannot be suspended in the air or supported by other objects. Also make sure that the support leg does not raise the child safety seat and remains perpendicular to the support plane, and check that the support leg force indicator displays green.

5.7 Accessory Configuration Diagram

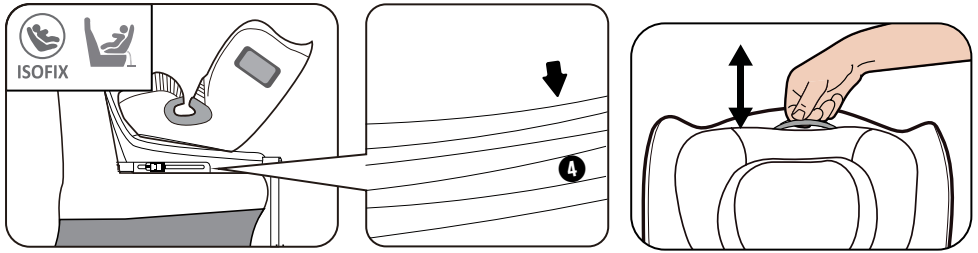


CUSHION



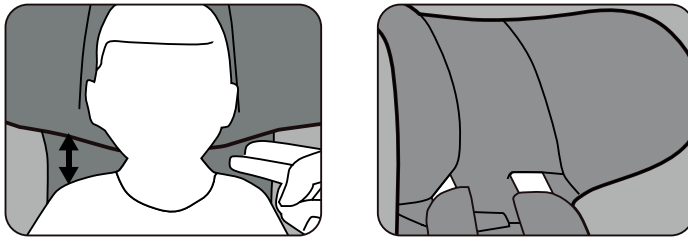
Child Height	Lining Configuration
40–87cm	1

5.8 Installation For Rearward Facing 40–105cm:



⚠ CAUTION! In order to provide your child with ideal protection and safety, the height of the headrest must be adjusted to a suitable position. The height of the headrest can be adjusted by one key stop. The headrest must be adjusted to leave a gap no more than two fingers between the child's shoulders.

⚠ For 40–87cm the insert cushion and baby cushions in the safety child safety seat must be used.



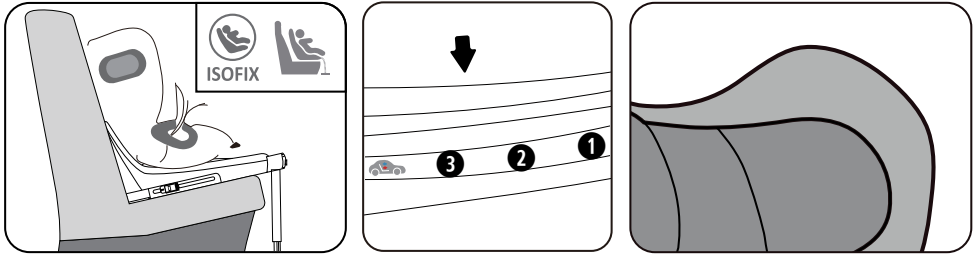
⚠ CAUTION! The shoulder strap ④ and the headrest are connected together and cannot be adjusted separately.

⚠ WARNING! Ensure that the belt can well restrain the pelvis when worn. Ensure that the seat belt is lowered when wearing, and the child's pelvis is firmly restrained.

⚠ WARNING! Do not use any stress points other than those described in the instruction document and marked on the child restraint system.

⚠ WARNING! Never use the insert cushion and baby cushions in the child safety seat when the child's weight reaches 10kg.

5.9 Installation For Rearward Facing 76–105cm:



For 76–105cm The child safety seat can be installed forward. In order to provide comprehensive protection for children, we recommend using the child safety seat in the rearward position as long as possible. If the child's leg space is insufficient, the forward installation can be used. To learn more about how to protect your child, please refer to the chapter "Adjusting seat belt".

⚠ CAUTION! According to traffic accident statistics, it is safer to install child safety seats facing opposite of the driving direction. Therefore, we recommend using the child safety seat in the rearward position as long as possible.

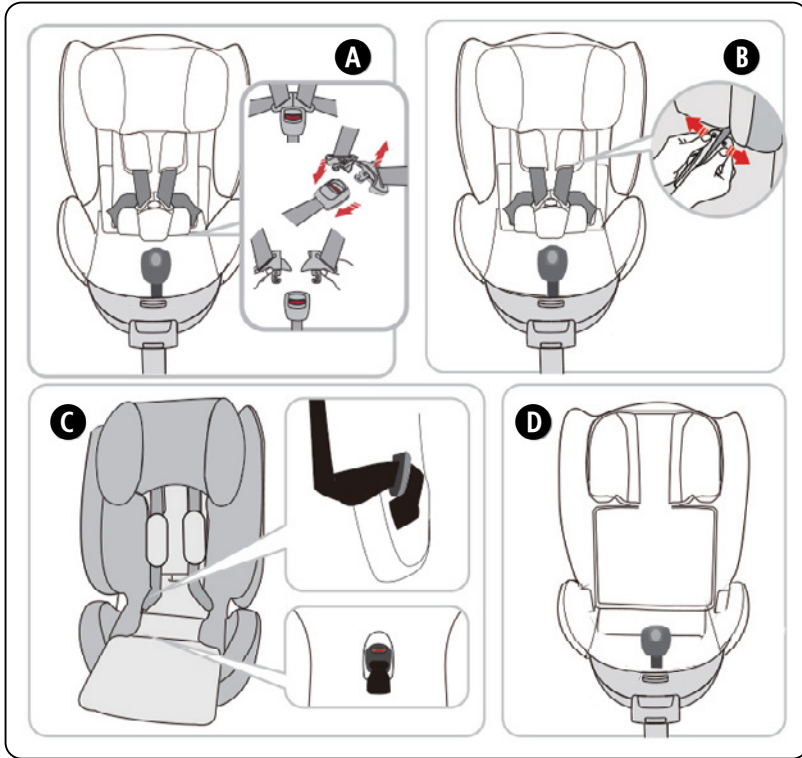
⚠ WARNING! Ensure that the belt can well restrain the pelvis when worn. Ensure that the seat belt is lowered when wearing, and the child's pelvis is firmly restrained.

⚠ WARNING! Do not use any other stress points than those described in the documentation and marked on the child restraint system.

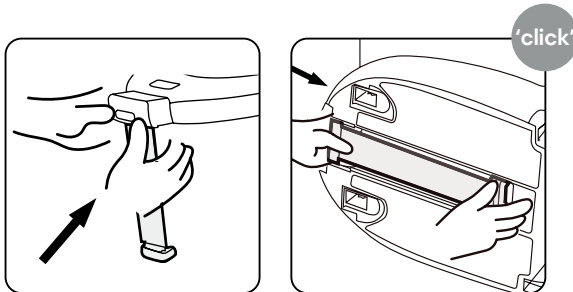
5.10 Installation For Forward Facing 100–135cm:

The 5-point safety belt system does not need to be dismantled when 100–135 cm. This seat adopts the hidden five-point safety belt system. Make it easier and safer when conversion to use between 40–105cm and 100–135cm.

Open the safety buckle (as shown in Figure A), pull out the safety buckle from the crotch piece, put it under the cloth cover through the middle hole of the base cloth cover, and put the crotch piece on top of the safety buckle horizontally. Lift the cloth cover in the middle of the backrest and put the shoulder cover flat inside the backrest for backing. Or cancel it (Figure B). Filter the shoulder strap down, lift the base cloth cover, place the left and right inserts in the reserved position on the left, put the cloth cover back, and straighten out (Figure C).



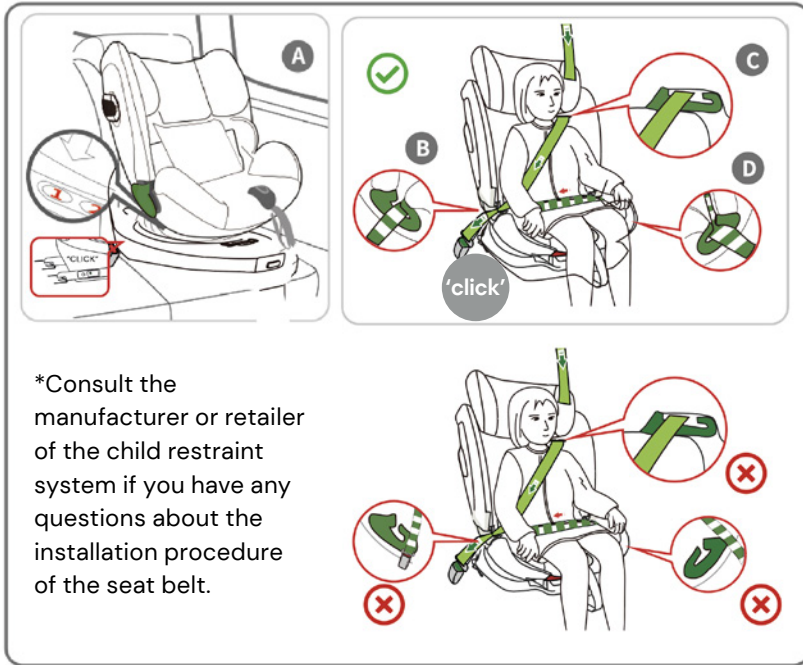
⚠ WARNING! Do not use any front guard unless specified or specified in the safety seat manual. The car seat belt must be used according to the instructions. Supporting leg is not allowed when 100–135cm.



Adjust the support leg to the shortest, press the support leg movement unlock button, then firmly push the support leg inward, fold it into the groove of the base and press it to a state that it won't fall out naturally.

Installation 1: ISOFIX Attachments + Adult Safety Belt

⚠ CAUTION! When 100–135cm the supporting leg must be retracted and folded into the base and the backrest must be adjusted to the upright position.

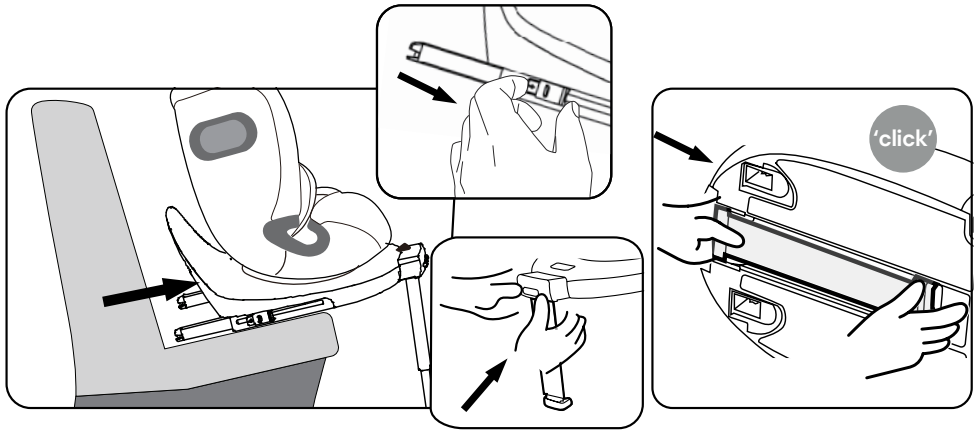


- Hide the five-point safety belt system and adjust the headrest to the appropriate height of the child's shoulder. When 100–135cm headrest has 7 positions can be adjusted. The backrest is in the first position and cannot be adjusted to other positions. Place the seat close to the car seat (Figure A).
- After the child is seated, pull the car seat belt out of the retractor, and pass the shoulder strap of the car seat belt through the seat belt guide hook on the side of the seat head (Figure C) and the seat belt guide slot on the other side (Figure B) as shown in the figure.
- The shoulder belt of the car seat pass through both sides of the seat belt guide grooves at the same time and buckle the seat belt socket (Figure D).
- Adjust the seat belt to the appropriate tightness according to the child's body type. Pull the extra car seat belt back into the retractor to ensure that the seat belt does not twist and turn over and the seat does not shake.

Installation 2: Adult Safety Belt Only

- The five-point safety belt system concealment method is shown on page 23.
- When 100–135cm (see page 24), it is not necessary to use the FIX interface and the support leg folded. After installation, please check: pull the extra car seat belt back into the retractor to ensure that the seat belt does not twist and turn over and the seat does not shake.

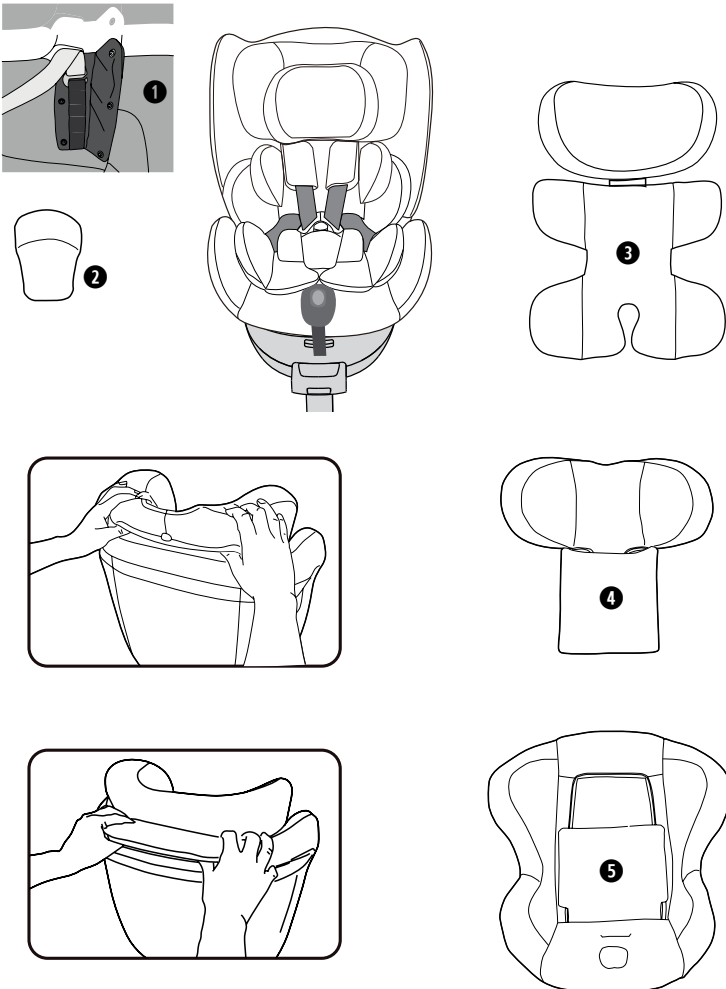
5.11 Remove The Seat From The Car



- Unlock button on both sides of ISOFIX connector 24.25. (After hearing “click”, see red in 26 FIX status window to unlock. Please do the same thing on both sides.
- Take out the seat, press 13 ISOFIX release button and retraction 23 FIX with one hand to the shortest position.
- Adjust the support leg to the shortest, press the support leg movement unlock button when firmly push the support leg inward, fold it into the groove of the base and press it to a state that it won't fall out naturally.

5.12 Remove Fabric Cover

1. Open the buckle, and remove the shoulder pad, protect pad, cushion and baby cushion from position 1 according to the serial number as shown in the figure.
2. Turn the headrest against the cloth cover, and remove the headrest cover along the side of the headrest.
3. Pull out a bit of the backrest cloth cover, pull out the backrest cloth cover along the gap between the backrest and the outer cover plate, and then pull out the cloth cover on the four sides of the backrest.



6. User Instructions

Thank you for purchasing Siena Twist+ All Stage 360° Car Seat!

The illustrations used in this manual are to illustrate the operation method and product structure of the product. In case of a small difference between the real product and the drawing, the real product shall prevail. In order to improve the quality of the product, we may change part of the structure and appearance of the product without giving notice. Please understand.

Common problems and maintenance in the use of child safety seat

When you find that the car belt is too short in use, there are the following solutions:

- Please try to use in different seats;
- Adjust the car seat backwards;
- If the seat belt of your car can be adjusted, please adjust it to a lower and proper position.
- Please pull down the slack in the seat belt.
- If you find that the child seat cannot be flat during use; Please try to position the car in different locations.
- Inspect parts regularly for wear or damage. If parts are found damaged, do not use them.

Buckle

- Food, drink or other residue may accumulate in the buckle. Please wash with warm water. When the buckle functions properly, you can hear a sound “click”.

Seat belt and plastic pieces

- Wipe with warm water and neutral soap.

About the fabric cover

- Do not use the product after removing the fabric cover;
- The fabric cover can be removed and washed, but we do not recommend that you remove it frequently. Once you remove and wash the fabric cover, be sure to reinstall it according to the original structure and make sure that no parts are missing or misinstalled;

- When cleaning the fabric cover, please gently scrub with soap and warm water. Please do not use any detergent, solvent or strong soap.
- Do not remove, move or change any structure or part of the fabric cover or seat belt system of the child safety seat; Do not add any lubricant or other chemicals to the fabric cover or seat belt system; Wash shoulder pads and buckle pad by hand under 40 ° C and lay them flat to dry;
- Do not dry clean, rotary drying, and away from strong light exposure.

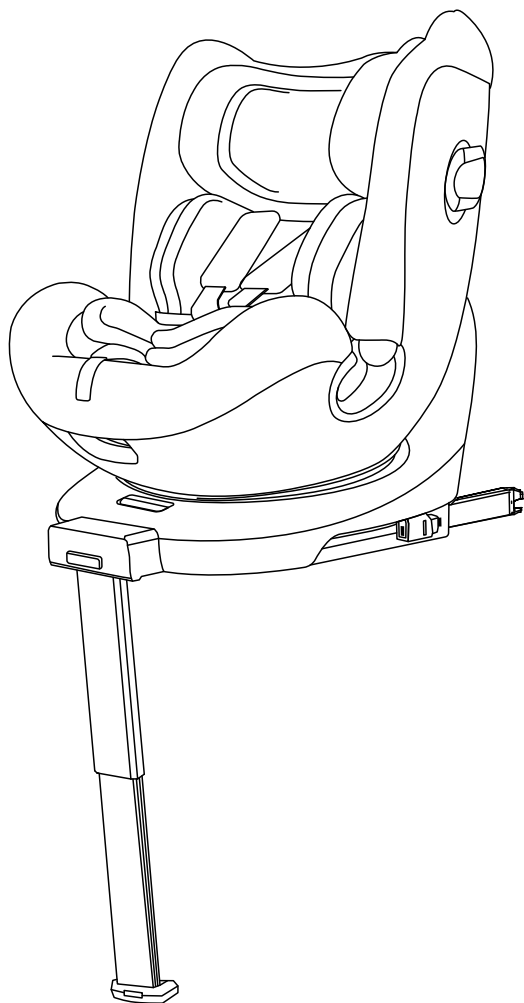


Precautions for use

- Please read the instructions of your car carefully before using this product;
- Please keep this manual well for repeated reference;
- This product requires that your car has a three-point traction type seat belt;
- If you have airbags in your car, use them with caution;
- Do not buy second-hand or transfer this type of product;
- Please do not place this product on a high place;

Warranty Policy

- To protect your baby from accidental injury, check and maintain the safety seat frequently.
- It is guaranteed for one year. (Warranty basis: purchase certificate and product anti-counterfeit barcode)



Instruction Manual

Siena Twist+ All Stage 360° Car Seat



 amanababy.com

hello@amanababy.com
Imported by Millsons of London Ltd. EC1V 2NX
Made in China